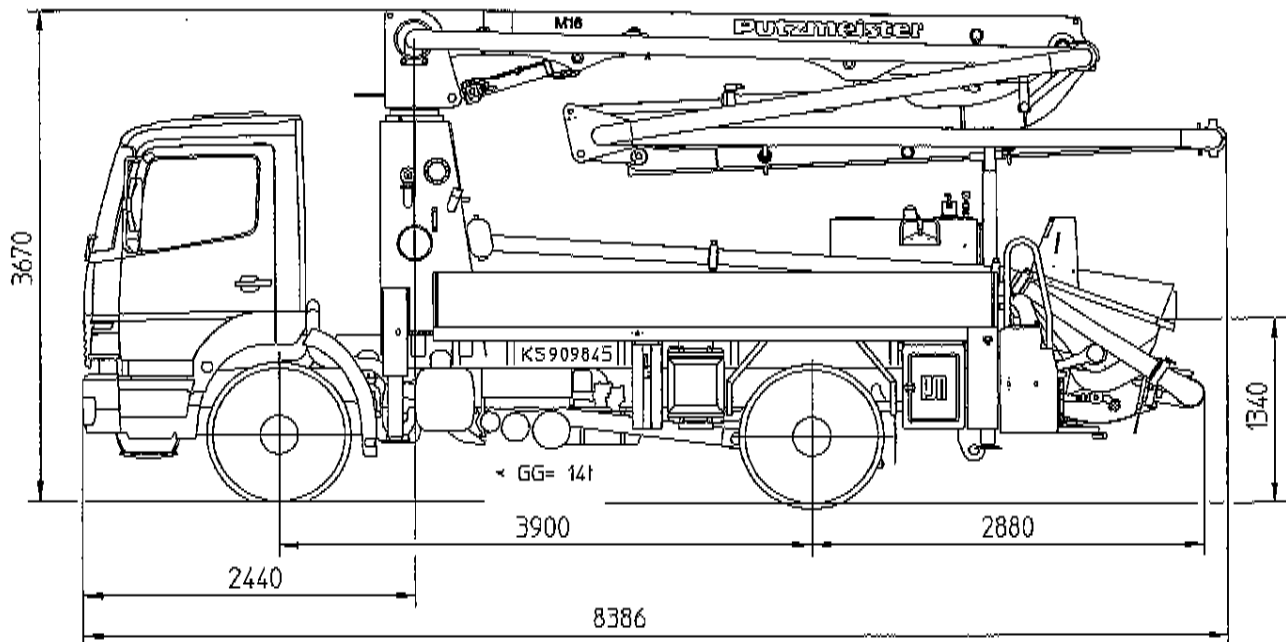
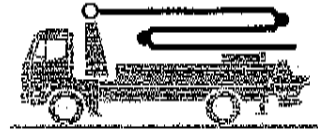


Truck-mounted concrete pump

BSF 16.09 H

Output up to 90 m³/h
Delivery pressure up to 78 bar



Note: Standard version. Dimensions and weights depend on truck and pump model.
Dimensions in mm, MB-Atego 1523 as example

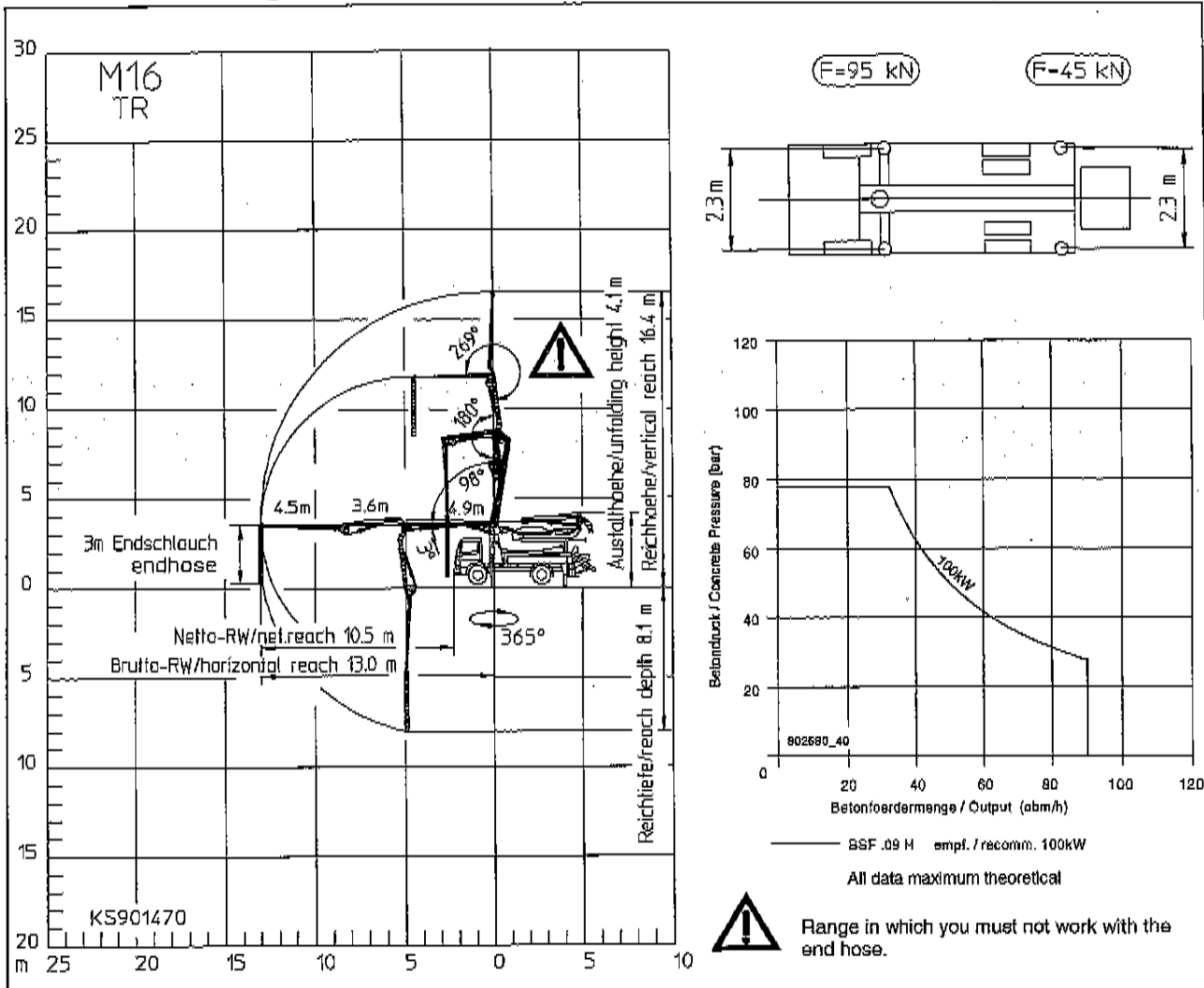
Technical Data

Boom M 16		
Reach height	m	16.4
Horizontal reach	gross	m 13.0
	net	m 10.5
Reach depth max.	m	8.1
Unfolding height	m	4.1
End hose length	m	3
Number of arms		3
Folding system		Z-fold (Z)
Delivery line		DN 100/4,5

Pump		BSF	.09 H
Rod side	Output	m ³ /h	-
	Delivery pressure	bar	-
Piston side	Output	m ³ /h	90
	Delivery pressure	bar	78
	Delivery cylinder	Ø mm	230
	Stroke	mm	1400

All data maximum theoretical.

Reach Information diagram, Support, Performance diagram



Delivery scope

	Standard	Options Package *	Options Package Plus		Standard	Options Package *	Options Package Plus
support plates 4x in magazine	•			plash guard foldable on rubber collar		•	•
concrete line DN 100 4,5", 108x4	•			EOC (Ergonic output control)		•	•
concrete hopper RS 900 with agitator	•			central lubrication hopper, electrical		•	•
diagnose interface, central for electric and hydraulic	•			working search light on boom for hopper illumination			•
remote control b/w with 25 m cable	•			flashlights for 2 support legs front			•
central lubrication strip hopper	•			lights 2x front side, for illumination support area front			•
rubber collar	•			high pressure water pump 100 bar with dry-run protection			•
painting: arm assembly RAL 3020 signalred	•			vibrator, electrical			•
painting: pump MB 1227 chrome yellow	•			step at rear of hopper			•
flushing water pump 160 l/min 25 bar	•			hard metal wear parts kit			•
water tank 500 l	•						
concrete line DN100 4,5, PM 22		•	•				
radio remote control prop.incl. CPC with output remote control by regulator, engine start/stop		•	•				
traffic permission kit		•	•				

* recommended in Europe

Please see quotation for exact serial delivery scope.